

# PANDJIRIS, INC

5151 Northrup • St. Louis, MO 63110 • (314) 776-6893

## QUICKSET GRIPPERS (MODEL "C-48")

The **Model "C-48" Quickset Gripper** is a cam operated assembly designed specifically for the welding industry. The gripper incorporates many features that make it especially suitable for the welding environment. These features include single point cam operation of the jaws and adjustable quick change reversible jaws that can be positioned for small and large diameter workpieces. Heavy duty construction and a completely enclosed face plate prevents flux and weld splatter from impairing the operation of the gripper.

Holding Capacity (outside clamping) Diameter .....	3" to 48"
Holding Capacity (inside clamping) Diameter .....	7" to 52"
Chuck Jaws .....	(3) Serrated & Hardened Self-Centering
Chuck Adjustment .....	Single Point Screw / Ball Lock Pin
Chuck Adjusting Bar .....	5/8" Dia. X 20"
Chuck Adj. Force (max. allowable) .....	1800 in-lb (60 lb. on 30" handle)
Jaws Attachment .....	Reversible, Quickset Ball Lock Pin
Mounting Holes .....	(3) for 5/8" Socket Head Cap Screws on 28-7/8" B.C.D.
Weight .....	711 lb.

### Optional Accessories:

For Mounting Gripper to Positioner

Extra set of Serrated and Hardened Jaws, Set of 3

**Terms:** Pandjiris, Inc. standard terms and conditions apply, f.o.b. Factory, St. Louis, Missouri, or designated ship point.

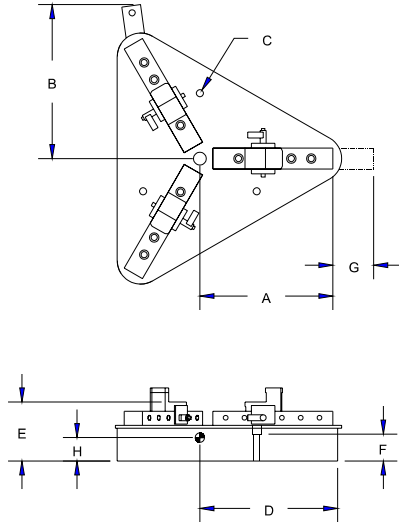
**Delivery:** Consult Factory

Approximate shipping weight: 711 lbs.

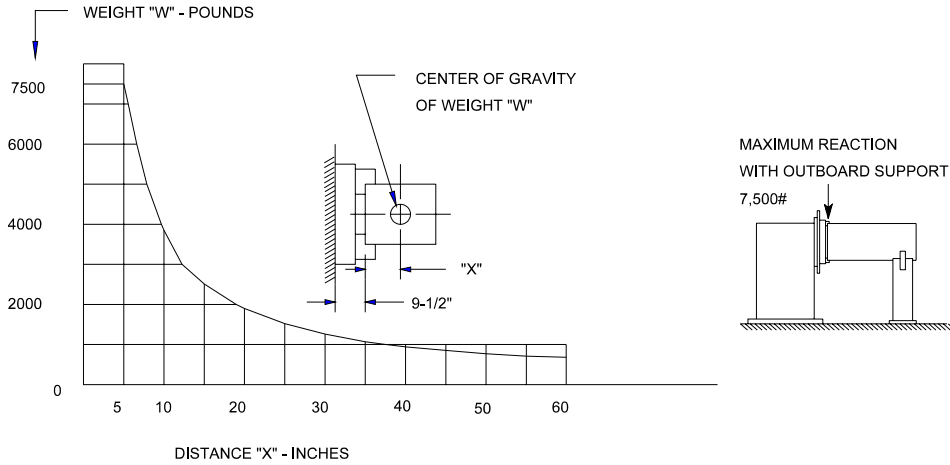
#### PRICE LIST

For Bulletin No.	: GRIP 393
Effective Date	: July 24, 1996
Page Number	: B-11

**QUICKSET GRIPPER SPECIFICATIONS  
 (MODEL "C-48")**



<b>Clamping Range</b>		I.D.	7" - 52"
		O.D.	3" - 48"
A	Jaw Bar Clearance	24-3/8"	
B	Crank Handle Clearance	29-3/4"	
C	Bolt Center Spacing	28-7/8"	
D	Frame Swing Clearance	24-7/8"	
E	Jaw Face Offset	9-1/2"	
F	Bolt Hole Length	5-5/8"	
G	Jaw Stroke	2-3/8"	
H	C.G. Location	5-7/8"	



**Terms:** Pandjiris, Inc. standard terms and conditions apply, f.o.b. Factory, St. Louis, Missouri, or designated ship point.

**Delivery:** Consult Factory

Approximate shipping weight: 711 lbs.

<b>PRICE LIST</b>	
For Bulletin No.	: GRIP 393
Effective Date	: June 1, 1995
Page Number	: B-12